



2020 CATALOG

ORDERING:

flavorfarms.us

512-229-5925

flavorfarmstx@gmail.com

ACACIA

Acacia dealbata

The *Acacia dealbata*, or Silver Wattle, is native to Tasmania and Australia. It's an evergreen tree that has beautiful, fluffy yellow flowers. It's a nitrogen fixer, so will feed fruit trees and other high feeders. It does have fairly vicious thorns, so wants to be put somewhere out of the way.



Height:	40-50 ft.
Width:	40-50 ft.
Growth rate:	Fast
Sunlight:	Full sun
Soil:	Prefers well-drained loamy soil
pH:	Prefers slightly acidic soil, but tolerates alkaline too
Harvest time:	n/a
Years to bear:	n/a
Pollinator:	n/a

APPLE, ANNA

Malus Domestica 'Anna'

The Anna was developed in Israel to be a low chill hour version of the Golden Delicious. Its fruit are red flushed over green. They are sweet and crisp, and will store fairly well.



Height:	20-30 ft.
Width:	15 ft.
Growth rate:	Moderate
Sunlight:	Full sun, although benefits from afternoon shade in summer
Soil:	Prefers well-drained sandy loam, but does well in other soil types too
pH:	Prefers slightly acidic soil
Harvest time:	June-July
Years to bear:	2-5
Pollinator:	Self-fertile, but will produce more with a different variety of apple, like Ein Shemer

APPLE, EIN SHEMER

Malus Domestica 'Ein Shemer'

The Ein Shemer was developed in Israel to produce fruit with very low chill hours. Its fruit are light green to yellow. They are sweet with a slightly acidic bite.



Height:	20-30 ft.
Width:	15 ft.
Growth rate:	Moderate
Sunlight:	Full sun, although benefits from afternoon shade in summer
Soil:	Prefers well-drained sandy loam, but does well in other soil types too
pH:	Prefers slightly acidic soil
Harvest time:	June-July
Years to bear:	3-5
Pollinator:	Self-fertile, but will produce more with a different variety of apple, like Anna

APPLE, MOLLIE'S DELICIOUS

Malus Domestica 'Mollies Delicious'

Mollie's Delicious was developed in New Jersey. It has a fairly low chill hour requirement. Its fruit have a red (over yellow) color. They are firm and sweet, and store well.



Height:	20-30 ft.
Width:	15 ft.
Growth rate:	Moderate
Sunlight:	Full sun, although benefits from afternoon shade in summer
Soil:	Prefers well-drained sandy loam, but does well in other soil types too
pH:	Prefers slightly acidic soil
Harvest time:	August, sometimes several pickings
Years to bear:	2-5
Pollinator:	Self-fertile, but will produce more with a different variety of apple, like Granny Smith

ARONIA

Aronia Melanocarpa

Aronia, also called Chokeberry, is a deciduous shrub native to North America. It produces a berry that is considered to be a super food. It is high in vitamins and minerals, and is being rigorously studied for many medicinal properties. The fruit is a little sour and astringent when eaten raw, so it is usually added to jams, pies, shakes, wines, etc. for consumption. Suitable for zones 3-8.



Height:	3-6 ft.
Width:	3-6 ft.
Growth rate:	Moderate
Sunlight:	Partial shade
Soil:	Any
pH:	Prefers slightly acidic soil, but tolerates mildly alkaline.
Harvest time:	Mid-late summer
Years to bear:	2 nd year
Pollinator:	Self-fertile

BIRD OF PARADISE

Caesalpinia pulcherrima

Red Bird of Paradise, or Pride of Barbados, is a returning perennial shrub in zone 8, or an evergreen in frost free zones. It is drought and heat resistant, and will suffer in poorly draining soil. It does not produce an edible fruit, but it is a nitrogen fixer, so it will help feed your fruit-bearing trees and shrubs. Its beautiful flower attracts hummingbirds and butterflies.



Height:	Up to 8 ft.
Width:	4-6 ft.
Growth rate:	Moderate - Fast
Sunlight:	Full sun
Soil:	Must have well-drained soil
pH:	Both acidic and alkaline
Harvest time:	n/a
Years to bear:	n/a
Pollinator:	n/a

BLACKBERRY, APACHE

Rubus fruticosus 'Apache'

The Apache is a thornless variety of blackberry. It is an erect, or self-supporting, shrub that does not need a trellis. It produces a large, sweet fruit. It was developed in Arkansas, and has low chill hour requirements.



Height:	5-8 ft.
Width:	3-6 ft.
Growth rate:	Moderate
Sunlight:	Full sun, partial shade
Soil:	Prefers well-drained sandy loam, but does well in other soil types too
pH:	Prefers slightly acidic soil
Harvest time:	July
Years to bear:	1-2
Pollinator:	Self-fertile, but will produce more with more than one plant.

BLACKBERRY, ARAPAHO

Rubus fruticosus 'Arapaho'

The Arapaho is a thornless variety of blackberry. It is an erect, or self-supporting, shrub that does not need a trellis. It produces a large, sweet fruit with small seeds. It was developed in Arkansas, and has low chill hour requirements.



Height:	4-5 ft.
Width:	3-4 ft.
Growth rate:	Moderate
Sunlight:	Full sun, partial shade
Soil:	Prefers well-drained sandy loam, but does well in other soil types too
pH:	Prefers slightly acidic soil
Harvest time:	June
Years to bear:	1-2
Pollinator:	Self-fertile, but will produce more with more than one plant.

BLACKBERRY, CHESTER

Rubus fruticosus 'Chester'

The Chester is a thornless variety of blackberry. It is an erect, or self-supporting, shrub, but can benefit from a trellis while it is strengthening its cane. It produces a large, sweet fruit with a very high yield. It was developed at the University of Maryland, and is the most cold tolerant of the blackberries we carry..



Height:	4-5 ft.
Width:	3-4 ft.
Growth rate:	Moderate
Sunlight:	Full sun, partial shade
Soil:	Prefers well-drained sandy loam, but does well in other soil types too
pH:	Prefers slightly acidic soil
Harvest time:	August
Years to bear:	1-2
Pollinator:	Self-fertile, but will produce more with more than one plant.

BLACKBERRY, NATCHEZ

Rubus fruticosus 'Natchez'

The Natchez is a thornless variety of blackberry. It is a semi-erect shrub that does well with a trellis. It produces a large, sweet, elongated. It was developed in Arkansas, and has low chill hour requirements.



Height:	4-5 ft.
Width:	3-4 ft.
Growth rate:	Moderate
Sunlight:	Full sun, partial shade
Soil:	Prefers well-drained sandy loam, but does well in other soil types too
pH:	Prefers slightly acidic soil
Harvest time:	June
Years to bear:	1-2
Pollinator:	Self-fertile, but will produce more with more than one plant.

BLUEBERRY, FARTHING

Vaccinium 'Farthing'

Developed by the University of Florida, Farthing Blueberries require less than 100 chill hours. They produce a dark blue, flavorful berry. The yield is usually very high, and so produces a medium sized berry; in low yield years, the berry will be larger. They will fruit for 6 weeks or more.



Height:	4-6 ft.
Width:	3-4 ft.
Growth rate:	Moderate
Sunlight:	Full sun, partial sun
Soil:	Prefers well-drained sandy loam
pH:	Must have acidic soil
Harvest time:	April-May
Years to bear:	2-3
Pollinator:	Self-fertile, but will produce more with a different variety

BLUEBERRY, PALMETTO

Vaccinium 'Palmetto'

Developed by the University of Georgia, Palmetto Blueberries require about 450 chill hours. They produce a medium-dark blue, very flavorful berry. The berry size is fairly small, but very sweet.



Height:	4-6 ft.
Width:	3-4 ft.
Growth rate:	Moderate
Sunlight:	Full sun, partial sun
Soil:	Prefers well-drained sandy loam
pH:	Must have acidic soil
Harvest time:	May
Years to bear:	2-3
Pollinator:	Self-fertile to a degree, but should be planted alongside a different variety

BLUEBERRY, SUMMER SUNSET

Vaccinium 'Summer Sunset'

Developed by the University of Georgia, Summer Sunset blueberry is a complex hybrid that is mostly Rabbiteye. They require about 300-400 chill hours. They produce a medium sized fruit with a good flavor. The fruit will turn all shades of color, finally ripening when it reaches a dark, almost black color.



Height:	3-4 ft.
Width:	2.5 ft.
Growth rate:	Moderate
Sunlight:	Full sun, partial sun
Soil:	Prefers well-drained sandy loam
pH:	Must have acidic soil
Harvest time:	May-June
Years to bear:	2-3
Pollinator:	Self-fertile to a degree, but should be planted alongside a different variety

BOYSENBERRY

Rubus ursinus × *Rubus idaeus*

Boysenberries have dewberry, blackberry, raspberry, and loganberry in their parentage. They are a vining shrub that has thorns. You will need a trellis if you want it grow upwards. They produce a very large, dark purple, and flavorful fruit.



Height:	5-6 ft.
Width:	5-6 ft.
Growth rate:	Fast
Sunlight:	Full sun, partial shade
Soil:	Prefers well-drained sandy loam
pH:	Prefers slightly acidic soil
Harvest time:	July
Years to bear:	1-2
Pollinator:	Self-fertile, but will produce more with more than one plant

CHILE PEQUIN

Capsicum annuum

Chile Pequin is a perennial pepper plant, native in southern United States, Mexico, and down into South America. It will freeze back down to the ground in temperatures below 30, but will come back in the spring. The pepper is small, round, and very hot (hotter than a cayenne pepper).



Height:	1-4 ft.
Width:	2 ft.
Growth rate:	Moderate
Sunlight:	Full sun, partial shade
Soil:	Prefers well-drained sandy loam, but does well in other soil types too
pH:	Prefers slightly acidic to neutral soil
Harvest time:	All through summer
Years to bear:	Fruits 1 st year
Pollinator:	Self-fertile

CHESTNUT, CHINESE

Castanea mollissima

The Chinese Chestnut is native to China and Korea, and unlike its American relative, it is resistant to chestnut blight. It is a big tree, with a dense, spreading canopy. The nut is large and meaty, and is perfect for roasting. The tree has a similar place in the canopy as Pecan trees.



Height:	40-60 ft.
Width:	40-60 ft.
Growth rate:	Slow to moderate
Sunlight:	Full sun
Soil:	Prefers moist, well-drained sandy loam, does not do well in clay.
pH:	Prefers slightly acidic soil
Harvest time:	September-October
Years to bear:	4-5
Pollinator:	Should be planted in pairs or groups for cross-pollination.

CRAPE MYRTLE, NATCHEZ

Lagerstroemia indica 'Natchez'

Crape Myrtle is native to China and Korea. It tolerates the heat of our summers very well, and, once it is established, will need almost no care. It blooms almost all summer long, making it an excellent tree for bees and for ornamental purposes. It is also spectacular in the fall as it loses its leaves. Natchez has a white flowers, and is the favorite of bees.



Height:	15-20 ft.
Width:	15-20 ft.
Growth rate:	Fast
Sunlight:	Full sun
Soil:	Does well in many different types of soil
pH:	Slightly acidic or alkaline soil
Harvest time:	n/a
Years to bear:	n/a
Pollinator:	n/a

CRAPE MYRTLE, MUSKOGEE

Lagerstroemia indica 'Muskogee'

Crape Myrtle is native to China and Korea. It tolerates the heat of our summers very well, and, once it is established, will need almost no care. It blooms almost all summer long, making it an excellent tree for bees and for ornamental purposes. It is also spectacular in the fall as it loses its leaves. The Muskogee has a beautiful lavender pink colored bloom.



Height:	15-20 ft.
Width:	15-20 ft.
Growth rate:	Fast
Sunlight:	Full sun
Soil:	Does well in many different types of soil
pH:	Slightly acidic or alkaline soil
Harvest time:	n/a
Years to bear:	n/a
Pollinator:	n/a

CRAPE MYRTLE, TONTO

Lagerstroemia indica 'Tonto'

Crape Myrtle is native to China and Korea. It tolerates the heat of our summers very well, and, once it is established, will need almost no care. It blooms almost all summer long, making it an excellent tree for bees and for ornamental purposes. It is also spectacular in the fall as it loses its leaves. The Tonto has fuchsia red blooms. It is also slightly smaller than other crape myrtle trees.



Height:	8-15 ft.
Width:	6-10 ft.
Growth rate:	Fast
Sunlight:	Full sun
Soil:	Does well in many different types of soil
pH:	Slightly acidic or alkaline soil
Harvest time:	n/a
Years to bear:	n/a
Pollinator:	n/a

CRAPE MYRTLE, TUSCARORA

Lagerstroemia indica 'Tuscarora'

Crape Myrtle is native to China and Korea. It tolerates the heat of our summers very well, and, once it is established, will need almost no care. It blooms almost all summer long, making it an excellent tree for bees and for ornamental purposes. It is also spectacular in the fall as it loses its leaves. The Tuscarora has a coral pink flower.



Height:	12-25 ft.
Width:	10-20 ft.
Growth rate:	Fast
Sunlight:	Full sun
Soil:	Does well in many different types of soil
pH:	Slightly acidic or alkaline soil
Harvest time:	n/a
Years to bear:	n/a
Pollinator:	n/a

CYPRESS, BALD

Taxodium distichum

The Bald Cypress is a deciduous conifer that will lose its needles in Fall. Native to the swampy regions of southern US, it adapts well to drier climates. The Bald Cypress is the state tree of Louisiana. They are great as a shade tree.

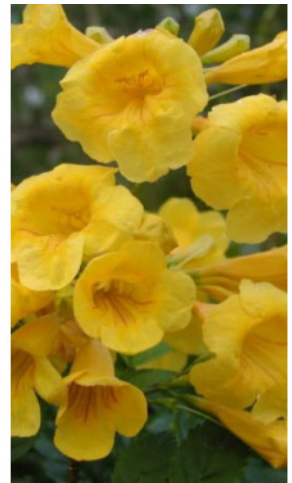


Height:	50-70 ft.
Width:	20-30 ft.
Growth rate:	Moderate
Sunlight:	Full sun, partial shade
Soil:	All types
pH:	Prefers slightly acidic soil
Harvest time:	n/a
Years to bear:	n/a
Pollinator:	n/a

ESPERANZA

Tecoma stans

Esperanza is native to Texas, Mexico and through South America. In a frost-free climate, it will grow to be 6-7 ft. tall. It can freeze back to the ground in a hard freeze, but providing temperatures do not get too low, it will come back in Spring. It has a beautiful and abundant yellow flow that can bloom all summer long, making it an excellent food for bees. It is also a nitrogen fixer, meaning it can help feed your fruit trees.



Height:	3-6 ft.
Width:	3-4 ft.
Growth rate:	Fast
Sunlight:	Full sun, or afternoon shade
Soil:	Prefers well-drained soil
pH:	Prefers a neutral or slightly alkaline soil
Harvest time:	n/a
Years to bear:	n/a
Pollinator:	n/a

FIG, BROWN TURKEY

Ficus carica 'Brown Turkey'

Brown Turkey figs are originally from France. They produce a fairly small sized, sweet fruit. It is rusty red to purple in color, with green flecks and pink flesh. It's heat tolerant, but needs protecting below 10 degrees. Planting on the south side of something gives protection from cold, northern fronts. Soil must be well drained, as figs do not like their roots sitting in water.



Height:	10-20 ft.
Width:	10-15 ft.
Growth rate:	Fast
Sunlight:	Full sun. Benefits from afternoon shade in summer. Best planted with southern exposure and protection from northern cold fronts.
Soil:	Must have well-drained soil
pH:	Prefers neutral or slightly acidic soil
Harvest time:	July
Years to bear:	1-2
Pollinator:	Self-fertile

FIG, CELESTE

Ficus carica 'Celeste'

Celeste produces a medium sized fruit that is very sweet. The fruit has light brown to purple skin, with bright pink flesh. As far as figs go, Celeste is cold hardy, however planting it on the south side of something will give it extra protection from the cold northern fronts. Soil must be well drained, as figs do not like their roots sitting in water.



Height:	7-12 ft.
Width:	7-12 ft.
Growth rate:	Fast
Sunlight:	Full sun, although benefits from afternoon shade in summer. Best planted with southern exposure and protection from northern cold fronts.
Soil:	Must have well-drained soil
pH:	Prefers neutral or slightly acidic soil
Harvest time:	July
Years to bear:	1-2
Pollinator:	Self-fertile

FIG, TEXAS EVERBEARING

Ficus carica 'Texas Everbearing'

Texas Everbearing produces a medium sized fruit that is mildly sweet and nearly seedless. It will produce several crops a year. As far as figs go, Texas Everbearing is cold hardy, however planting it on the south side of something will give it extra protection from the cold northern fronts. Soil must be well drained, as figs do not like their roots sitting in water.



Height:	7-12 ft.
Width:	7-12 ft.
Growth rate:	Fast
Sunlight:	Full sun, although benefits from afternoon shade in summer. Best planted with southern exposure and protection from northern cold fronts.
Soil:	Must have well-drained soil
pH:	Prefers neutral or slightly acidic soil
Harvest time:	May-June, August-October
Years to bear:	1-2
Pollinator:	Self-fertile

GOJI BERRY

Lycium chinense

Goji, or Wolfberry, is native to Asia and has been used for centuries for its culinary and medicinal properties. The vine produces copious amounts of red berries that have a slightly sour flavor. They are touted as a super food due to their high levels of antioxidants, vitamins, and amino acids. The fruit is usually sold as a dried berry.



Height:	10-13 ft. but best pruned to height of 4 ft.
Width:	4 ft.
Growth rate:	Fast
Sunlight:	Full sun or partial shade
Soil:	Any, but prefers well-drained soil
pH:	Prefers neutral or slightly alkaline soil
Harvest time:	Throughout summer
Years to bear:	1 st year
Pollinator:	Self-fertile

GRAPE, ALACHUA

Vitis rotundifolia 'Alachua' Muscadinia

This Muscadine grape was developed at the University of Florida. It is pest and disease resistant, and can tolerate high heat. It grows at a vigorous rate and can produce for decades. Its fruit is purple/black, flavorful, and medium sized. The grape has a few seeds and slightly tough skin, great for jellies and juice.



Height:	10-20 ft.
Width:	20 ft. between vines
Growth rate:	Fast
Sunlight:	Full sun, partial
Soil:	Prefers well-drained sandy loam
pH:	Prefers slightly acidic soil
Harvest time:	July
Years to bear:	Can fruit 1 st year
Pollinator:	Self-fertile

GRAPE, DIXIE

Vitis rotundifolia 'Dixie' Muscadinia

This Muscadine grape was developed in Georgia. It is pest and disease resistant, and can tolerate high heat. It grows at a vigorous rate and can produce for decades. Its fruit is bronze, flavorful, and medium sized. The grape has a few seeds and slightly tough skin, great for jellies and juice.



Height:	10-20 ft.
Width:	20 ft. between vines
Growth rate:	Fast
Sunlight:	Full sun, partial
Soil:	Prefers well-drained sandy loam
pH:	Prefers slightly acidic soil
Harvest time:	July
Years to bear:	Can fruit 1 st year
Pollinator:	Self-fertile

JUJUBE

Ziziphus jujuba

Jujube, also known as Chinese date, originates from China and has been cultivated for 4000 years. It produces a sweet-tart fruit, with a flavor similar to apple. When ripe, the fruit is red and can be eaten fresh or dried. It is loaded with energy, minerals, and vitamins, and has many medicinal uses. The tree will tolerate extreme temperatures and conditions.

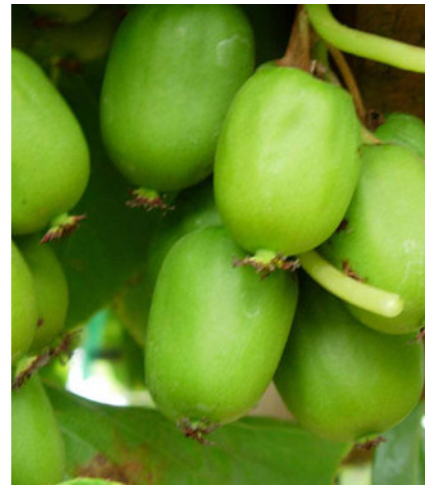


Height:	30-40 ft.
Width:	15 ft.
Growth rate:	Moderate
Sunlight:	Full sun
Soil:	Prefers well-drained sandy loam, but does well in other soil types too
pH:	Tolerates anything, even high salinity or high alkalinity
Harvest time:	August-October
Years to bear:	2
Pollinator:	Self-fertile

KIWI BERRY, CHANG BAI

Actinidia arguta 'Chang Bai 5'

The hardy kiwi, or kiwi berry, is both heat and cold tolerant. Its fruit is smaller than a regular kiwi, but much sweeter and the skin is soft and edible. It can produce up to 100 lb. of fruit a year. The plant requires a sturdy trellis, and should be kept moist, especially during the hot months. The Chang Bai is a female hardy kiwi, and the largest fruit of its kind.



Height:	Can vine up to 20 ft. a year, in ideal conditions
Width:	-
Growth rate:	Fast
Sunlight:	Partial shade, full sun
Soil:	Prefers well-drained sandy loam, but does well in other soil types too
pH:	Prefers slightly acidic soil
Harvest time:	August
Years to bear:	2-3
Pollinator:	Chang Bai is female and needs a male or self-fertile (like 'Issai') for pollination

KIWI BERRY, ISSAI

Actinidia arguta 'Issai'

The hardy kiwi, or kiwi berry, is both heat and cold tolerant. Its fruit is smaller than a regular kiwi, but much sweeter and the skin is soft and edible. It can produce up to 100 lb. of fruit a year. The plant requires a sturdy trellis, and should be kept moist, especially during the hot months.

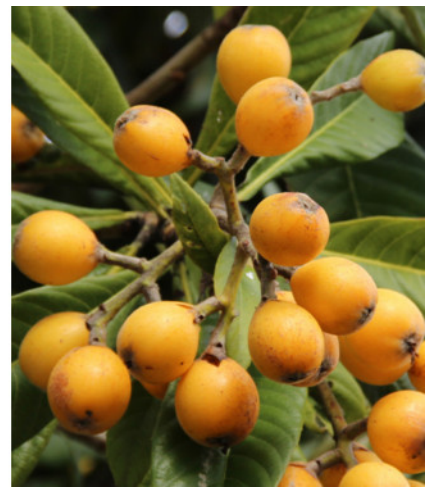


Height:	Can vine up to 20 ft. a year, in ideal conditions
Width:	-
Growth rate:	Fast
Sunlight:	Partial shade, full sun
Soil:	Prefers well-drained sandy loam, but does well in other soil types too
pH:	Prefers slightly acidic soil
Harvest time:	August
Years to bear:	2-3
Pollinator:	Issai is self-fertile, we also have a female variety that needs Issai or a male for pollination

LOQUAT

Eriobotrya japonica

Loquats are native to China and are cultivated for their sweet, prolific fruit, as well as their leaves for tea. The tree is evergreen, and the large, waxy leaves are very ornamental. Well established trees can tolerate cold down to 12 degrees. They are drought tolerant, but will produce more with adequate water.



Height:	Can be 20-30 ft. (usually smaller)
Width:	10-20 ft.
Growth rate:	Moderate
Sunlight:	Full sun, partial shade
Soil:	Sandy loam to heavy clay to limestone, but needs good drainage
pH:	Any
Harvest time:	Late spring
Years to bear:	8-10 years on seedlings, 2-3 grafted trees
Pollinator:	Self-fertile, but can produce more with another tree

MIMOSA

Albizia julibrissin

The Mimosa, or Persian silk tree, is native to Asia, and is both cold and drought tolerant. It is a beautiful tree, normally used as an ornamental. Mimosas are most useful to the homesteader as 1) a nitrogen fixer (brings up nitrogen for nitrogen feeders, like fruit trees), and 2) bee and hummingbird food. The seedpods are poisonous, and the trees can become invasive.



Height:	20-35 ft.
Width:	20-35 ft.
Growth rate:	Fast
Sunlight:	Full sun, partial shade
Soil:	Any
pH:	Prefers slightly acidic soil
Harvest time:	n/a (blooms April-July)
Years to bear:	n/a seedpods are poisonous
Pollinator:	n/a

MULBERRY, PAKISTAN

Morus macroura

Mulberry is a very fast growing tree that is excellent for providing shade in a hurry. They are tolerant of heat, humidity, drought, and poor soil. Once established, mulberry should not need much care. Pakistan Mulberry produces a long fruit, usually about 4". It's sweet, similar to a raspberry, though less acidic and doesn't have the seeds that get stuck in your teeth.



Height:	30-40 ft.
Width:	30-40 ft.
Growth rate:	Fast
Sunlight:	Full sun
Soil:	Prefers well-drained sandy loam, but does well in other soil types too
pH:	Prefers slightly acidic soil
Harvest time:	April-June
Years to bear:	2-3
Pollinator:	Self-fertile

MULBERRY, WHITE

Morus alba

Mulberry is a very fast growing tree that is excellent for providing shade in a hurry. They are tolerant of heat, humidity, drought, and poor soil. Once established, mulberry should not need much care. The White Mulberry is usually cultivated for silkworm feed, however its leaves make great animal feed, and the fruit are sweet.



Height:	30-40 ft.
Width:	30-40 ft.
Growth rate:	Fast
Sunlight:	Full sun
Soil:	Prefers well-drained sandy loam, but does well in other soil types too
pH:	Prefers slightly acidic soil
Harvest time:	April-June
Years to bear:	2-3
Pollinator:	Self-fertile

PALO VERDE/RETAMA

Parkinsonia aculeata

Retama, or Palo Verde, is native to North America. It is a nitrogen fixer (can help feed other trees and shrubs), and is drought tolerant. It produces pods that can be used as animal feed. Otherwise, it is a great source of food for bees. It does have thorns, so don't plant somewhere that gets a lot of traffic.



Height:	10-22 ft.
Width:	10-22 ft.
Growth rate:	Fast
Sunlight:	Full sun
Soil:	Tolerates any soil that is well drained
pH:	Prefers slightly acidic soil
Harvest time:	Blooms late spring-early fall
Years to bear:	n/a
Pollinator:	Self-fertile

PEACH, LA FELICIANA

Prunus Persica 'La Feliciana'

Developed in Louisiana to produce fruit with low chill hours, and to thrive in a hot, humid climate. It produces a freestone peach. The fruit has a dark red flush, and its flesh is firm, sweet, and tangy.



Height:	15 ft.
Width:	10-12 ft.
Growth rate:	Fast
Sunlight:	Full sun
Soil:	Prefers well-drained loamy soil
pH:	Prefers slightly acidic soil
Harvest time:	June-July
Years to bear:	1-3
Pollinator:	Self-fertile, though can produce more with a different species of peach

PEACH, LORING

Prunus Persica 'Loring'

Developed in Missouri, the Loring peach requires medium chill hours (not recommended for southern Texas). It has a large yellow fruit with a red blush. It is said to be one of the tastiest peaches. It produces a freestone peach.



Height:	15 ft.
Width:	10-12 ft.
Growth rate:	Fast
Sunlight:	Full sun
Soil:	Prefers well-drained loamy soil
pH:	Prefers slightly acidic soil
Harvest time:	June-July
Years to bear:	2-3
Pollinator:	Self-fertile, though can produce more with a different species of peach

PEACH, RIO GRANDE

Prunus Persica 'Rio Grande'

Bred in Texas as a low chill hour peach. It produces a medium sized, freestone peach. The fruit is yellow with a red blush, and is juicy with a delicate flavor.



Height:	15 ft.
Width:	10-12 ft.
Growth rate:	Fast
Sunlight:	Full sun
Soil:	Prefers well-drained loamy soil
pH:	Prefers slightly acidic soil
Harvest time:	May-June
Years to bear:	2-3
Pollinator:	Self-fertile, though can produce more with a different species of peach

PEACH, SAM HOUSTON

Prunus Persica 'Sam Houston'

Sam Houston peach was developed by Texas A & M to produce fruit with low chill hours. It is a freestone peach. The fruit has a red flush, and its flesh is sweet, juicy, and low in acidity.



Height:	15 ft.
Width:	10-12 ft.
Growth rate:	Fast
Sunlight:	Full sun
Soil:	Prefers well-drained loamy soil
pH:	Prefers slightly acidic soil
Harvest time:	July
Years to bear:	3 rd year
Pollinator:	Self-fertile, though can produce more with a different species of peach

PEAR, 20TH CENTURY

Pyrus pyrifolia 'Niiisseiki'

This Asian pear produces a large, golden yellow fruit with white, firm flesh. It's sweet and juicy, and preserves well. It requires low chill hours (about 300-400). It is cold hardy, as well as heat and drought resistant. It can be susceptible to Fireblight.

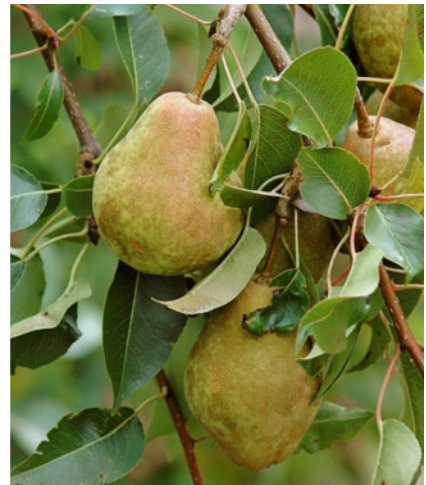


Height:	12-30 ft.
Width:	12-18 ft.
Growth rate:	Moderate
Sunlight:	Full sun
Soil:	Prefers well-drained sandy loam, but does well in other soil types too. Can tolerate flooding
pH:	Prefers slightly acidic soil
Harvest time:	August
Years to bear:	3-5
Pollinator:	Self-fertile, but will produce more with a companion

PEAR, KIEFFER

Pyrus communis x *Pyrus pyrifolia* 'Kieffer'

Kieffers are a cross between an Asian and European pear. They produce a large, golden yellow fruit with some crimson blush. The flesh is white, crisp, and coarse. Preserves very well, and is great for canning and baking. It requires low chill hours (about 350-400). It is cold hardy, as well as heat and drought resistant. It is resistant to Fireblight.



Height:	20 ft.
Width:	20 ft.
Growth rate:	Fast
Sunlight:	Full sun
Soil:	Prefers well-drained sandy loam, but does well in other soil types too. Can tolerate flooding
pH:	Prefers slightly acidic soil
Harvest time:	September-October
Years to bear:	4-6
Pollinator:	Self-fertile, but will produce more with a companion

PEAR, MOONGLOW

Pyrus communis 'Moonglow'

Moonglow is a European pear that produces a soft, juicy fruit, which is nearly free of grit. It is a medium to large, brownish-green fruit. It requires about 500 chill hours. It is cold hardy, as well as heat and drought resistant. It is resistant to Fireblight.



Height:	12-20 ft.
Width:	12-13 ft.
Growth rate:	Moderate
Sunlight:	Full sun
Soil:	Prefers well-drained sandy loam, but does well in other soil types too
pH:	Prefers slightly acidic soil
Harvest time:	August-September
Years to bear:	2-3
Pollinator:	Requires another variety to pollinate (within 100')

PEAR, ORIENT

Pyrus communis x *Pyrus pyrifolia* 'Orient'

Orient is a cross between an Asian and European pear, known as the heaviest bearing pear tree. It produces a creamy, juicy pear with a fairly fine texture. It is a large, round yellow-green fruit. It requires low chill hours (about 350-400). It is cold hardy, as well as heat and drought resistant. It is resistant to Fireblight.



Height:	20 ft.
Width:	20 ft.
Growth rate:	Fast
Sunlight:	Full sun
Soil:	Prefers well-drained sandy loam, but does well in other soil types too
pH:	Prefers slightly acidic soil
Harvest time:	August-September
Years to bear:	3-5
Pollinator:	Requires another variety to pollinate (within 100') – Bartlett, Moonglow, Kieffer.

PECAN, NATIVE

Juglandaceae *Carya illinoensis*

Native Pecan trees are hardy, huge trees that produce a small, yet delicious, fruit. In the wild, they are found along creeks and rivers, as they need access to water (though they don't like to remain wet). They need deep soil too.



Height:	65-130 ft.
Width:	40-75 ft.
Growth rate:	Moderate
Sunlight:	Full sun
Soil:	Prefers well-drained, deep soil. Must have access to moisture
pH:	4.3-7.5
Harvest time:	November-December
Years to bear:	10-15 years (much less for grafted varieties)
Pollinator:	Not self-fertile. Trees have male and female parts, but they do not bloom at the same time. They must have a pecan of a different variety to pollinate.

PENCIL PLANT

Euphorbia tirucalli

Pencil plant, or Milkbush, is a succulent native to arid South Africa and India. It has a milky white sap that can be strongly irritating to some people, and should be washed off as soon as possible if you get any on you. It is heat and drought resistant, but does not tolerate temperatures below 25 degrees, so is often used as a very hardy houseplant.



Height:	Up to 6 ft.
Width:	15 ft.
Growth rate:	Moderate
Sunlight:	Full sun, or on a sunny window ledge if inside
Soil:	Must have well-drained soil
pH:	Prefers slightly acidic soil
Harvest time:	n/a
Years to bear:	n/a
Pollinator:	n/a

PINE, ITALIAN STONE

Pinus pinea

The Italian Stone Pine, or Umbrella pine, is native to the Mediterranean region. It has been cultivated for millennia for its pinenut. It is an evergreen coniferous tree that, once matured, has a very distinctive umbrella shaped. It is cold tolerant down to 10-20 degrees.



Height:	40-80 ft.
Width:	40-50 ft.
Growth rate:	Slow-moderate
Sunlight:	Full sun, partial shade
Soil:	Prefers well-drained sandy loam
pH:	Highly acidic to highly alkaline soil
Harvest time:	April, three years after pollination
Years to bear:	5
Pollinator:	Self-fertile (monoecious – male and female parts on same tree)

PINEAPPLE GUAVA

Acca (or feijoa) sellowiana

This shrub, native to South America, can grow up to 8' tall. It is evergreen and is often used as a hedge by planting them close together. Pineapple Guava produces a fruit that has a similar taste to the guava, hence the name. They are deer and bug resistant. They don't suffer from disease, and thrive with relatively little care.



Height:	8-10 ft. (can grow to 15')
Width:	6-8 ft.
Growth rate:	Moderate
Sunlight:	Full sun, partial shade
Soil:	Prefers well-drained sandy loam, but can do light clay if not saturated
pH:	Prefers slightly acidic soil
Harvest time:	Fall (soft when ripe, and will fall off shrub)
Years to bear:	2-4
Pollinator:	Can be self-fertile, but more successful with a companion

PLUM, DAMSON

Prunus domestica subsp. *insititia*

The Damson plum was cultivated in ancient Greece. It produces an oblong, purple, and extremely sweet fruit. The high sugar content makes it ideal for making dates. It requires 600-800 chill hours. Should be pruned in spring or summer, not winter (to avoid silver leaf disease).



Height:	15-20 ft.
Width:	15-20 ft.
Growth rate:	Moderate
Sunlight:	Full sun, although benefits from afternoon shade in summer
Soil:	Prefers well-drained sandy loam, but does well in other soil types too
pH:	Prefers slightly acidic or slightly alkaline soil
Harvest time:	August-September
Years to bear:	3-4
Pollinator:	Self-fertile, but produces more with another European plum

PLUM, METHLEY

Prunus salicina 'Methley'

Methley is a cultivar of a Japanese plum, although it originated in China. Its fruit is round, clingstone, and of a red-purple color. The flesh has an amber tinge, and is sweet, juicy, and very flavorful. They are heat tolerant and do not require many chill hours (150-250). A late frost could hurt their early blooms.



Height:	15-20 ft.
Width:	15-20 ft.
Growth rate:	Moderate
Sunlight:	Full sun, although benefits from afternoon shade in summer
Soil:	Prefers well-drained sandy loam, but does well in other soil types too
pH:	Prefers slightly acidic or slightly alkaline soil
Harvest time:	May-June
Years to bear:	3-6
Pollinator:	Self-fertile, but will produce more with another Japanese plum

PLUM, SANTA ROSA

Prunus salicina 'Santa Rosa'

Santa Rosa is a Japanese plum developed in California. Its large fruit is clingstone, red to purple in color, with gold flesh. It is juicy, and is both sweet and tart. They are heat tolerant and do not require many chill hours (300-500).



Height:	15-20 ft.
Width:	15-20 ft.
Growth rate:	Moderate
Sunlight:	Full sun, although benefits from afternoon shade in summer
Soil:	Prefers well-drained sandy loam, but does well in other soil types too
pH:	Prefers slightly acidic soil
Harvest time:	July
Years to bear:	3-5
Pollinator:	Self-fertile, but will produce more with another Japanese variety

PLUM, SCARLET BEAUTY

Prunus salicina 'Scarlet Beauty'

Scarlet Beauty is a Japanese plum, developed in Florida. It has a delicious, juicy fruit, with red skin and red flesh. It is heat tolerant and mildly drought tolerant. A really hard freeze (below 20 degrees) could damage it, and it only requires 150 chill hours. A late freeze can damage blossoms.



Height:	15-20 ft.
Width:	15-20 ft.
Growth rate:	Moderate
Sunlight:	Full sun, although benefits from afternoon shade in summer
Soil:	Prefers well-drained sandy loam, but does well in other soil types too
pH:	Prefers slightly acidic soil
Harvest time:	May
Years to bear:	3-5
Pollinator:	Self-fertile, but will produce more with another Japanese plum

PLUMCOT, SPRING SATIN

Prunus salicina x *armeniaca* 'Spring Satin'

Plumcot is a cross between a plum and an apricot, developed in Georgia. It produces a large fruit with a reddish black skin and golden, reddish flesh. It is extremely sweet (33% sugar). It does well in the heat and humidity. It requires about 700 chill hours.



Height:	10-12 ft.
Width:	8-10 ft.
Growth rate:	Moderate
Sunlight:	Full sun, although benefits from afternoon shade in summer
Soil:	Prefers well-drained sandy loam, but does well in other soil types too
pH:	Prefers slightly acidic soil
Harvest time:	May
Years to bear:	2-5
Pollinator:	Need a pollinator; any Japanese plum will work

POMEGRANATE, WONDERFUL

Punica granatum 'Wonderful'

The Wonderful produces a large, red fruit filled with soft seeds. Pomegranates are known as a super-food, being very high vitamin C, antioxidants, and fiber. The interior segments can be eaten fresh or juiced. It is heat and drought tolerant, and only requires about 150-200 chill hours.



Height:	8-15 ft.
Width:	5-10 ft.
Growth rate:	Moderate
Sunlight:	Full sun
Soil:	Prefers well-drained sandy loam, but does well in other soil types too
pH:	Prefers slightly acidic soil
Harvest time:	September-October
Years to bear:	2-3
Pollinator:	Self-fertile

ROSEMARY

Rosmarinus officinalis

Rosemary is an evergreen, perennial herb, native to the drier parts of the Mediterranean. It is heat and drought tolerant, and can grown to be almost a tree in perfect conditions. It seems to be mostly unaffected by pests or disease. It makes an excellent herb, and very easy to dry.



Height:	3-5 ft.
Width:	3-5 ft.
Growth rate:	Moderate
Sunlight:	Full sun
Soil:	Prefers well-drained loamy soil
pH:	Prefers slightly acidic soil
Harvest time:	All year
Years to bear:	1 st year
Pollinator:	n/a

SAGE

Salvia officinalis

Sage is an evergreen, perennial herb, native to the drier parts of the Mediterranean. It is heat and drought tolerant. It seems to be mostly unaffected by pests or disease. It makes an excellent herb. It is a great companion plant to Rosemary.



Height:	1-3 ft.
Width:	1-3 ft.
Growth rate:	Moderate
Sunlight:	Full sun, although benefits from afternoon shade in summer
Soil:	Prefers well-drained loamy soil
pH:	Prefers slightly acidic soil
Harvest time:	Any time
Years to bear:	1 st year
Pollinator:	n/a

VETIVER

Chrysopogon zizanioides

Vetiver is a perennial bunchgrass native to India. It has an extensive, matted root system that grows downwards, making it an excellent choice for erosion control. It is grown commercially for the oil extracted from its roots (used mostly in cosmetics), and for its fibrous nature used in ropes and handicrafts.

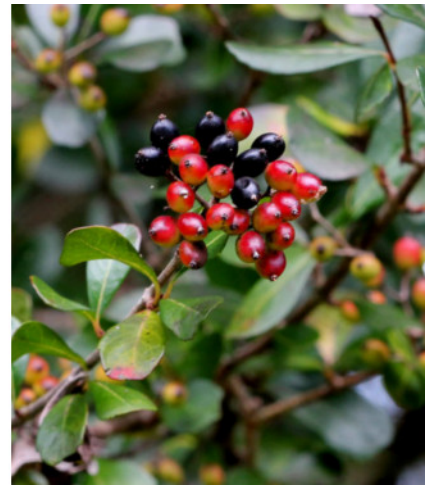


Height:	Roots: 8' or more deep
Width:	Roots: 2' wide
Growth rate:	Fast
Sunlight:	Full sun, can tolerate some shade
Soil:	Any. Can even tolerate saline soil and being submerged for more than a month
pH:	4.5-10.5
Harvest time:	n/a
Years to bear:	n/a
Pollinator:	Propagates best by splitting older plants into the plantlets that grow at the base.

VIBURNUM, EVERLEAF

Viburnum obovatum 'Everleaf'

The Viburnum is a beautiful hedge that flowers in winter and early spring, making it a very useful plant for bees and as an ornamental. The Everleaf is more evergreen than most viburnums. It is very hardy and drought tolerant, but will need watering for first year. Its fruit ripens in late summer and is a great food source for wildlife (some viburnum fruits are edible to humans too).



Height:	6-8 ft. (can grow up to 20')
Width:	6-8 ft.
Growth rate:	Moderate
Sunlight:	Full sun to full shade
Soil:	Most different types; low tolerance for saline
pH:	Acidic or alkaline
Harvest time:	Blooms in late winter/early spring; fruit ripens in late summer
Years to bear:	n/a
Pollinator:	n/a

VITEX

Vitex agnus-castus

Vitex, or Chaste tree, is native to China and India. It is a large shrub or small tree that blooms all summer long, making it an excellent source of bee food. Both the leaves and berries have been used medicinally. Vitex is heat and drought tolerant, and once established, you will not need to water it.



Height:	10-15 ft.
Width:	Up to 15 ft.
Growth rate:	Moderate
Sunlight:	Full sun
Soil:	Many types, but must be well drained
pH:	Prefers slightly acidic soil
Harvest time:	n/a – blooms May-September
Years to bear:	n/a
Pollinator:	n/a

WALNUT, BLACK

Juglans Nigra

Black Walnut is one of the most valuable trees from North America, prized for its high quality wood, substantial shade, and its tasty walnuts. It does exude a natural herbicide, Juglone, which will inhibit certain plants' growth – be sure to plant at least 50' away from susceptible plants.



Height:	50-70 ft.
Width:	50-70 ft.
Growth rate:	Moderate
Sunlight:	Full sun
Soil:	Widely adaptable
pH:	Prefers near neutral soil (6.8-7.2)
Harvest time:	Fall
Years to bear:	4-7
Pollinator:	Self-fertile, but will produce more with a different variety

ORDERING:

www.flavorfarms.us

512-229-5925

flavorfarmstx@gmail.com